

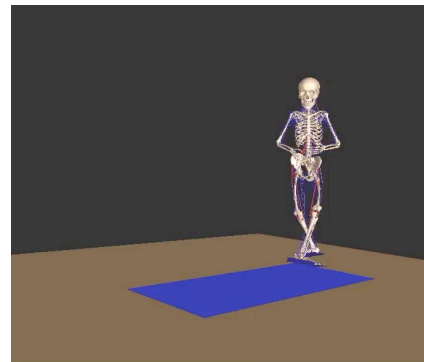
# Himeno Laboratory

## Research Theme

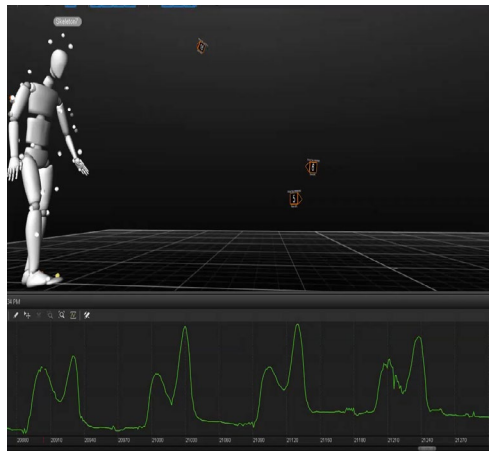
- Computational Fluid Dynamics (Blood Flow, Flow around Ball, etc.)
- BioMechanics Analysis (Gait Motion, Sport Motion, etc.)
- Visualization (3D Flows, etc.)

## Measurements

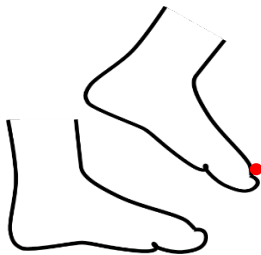
- Motion Capture System
- IMU sensors
- VR/AR Application



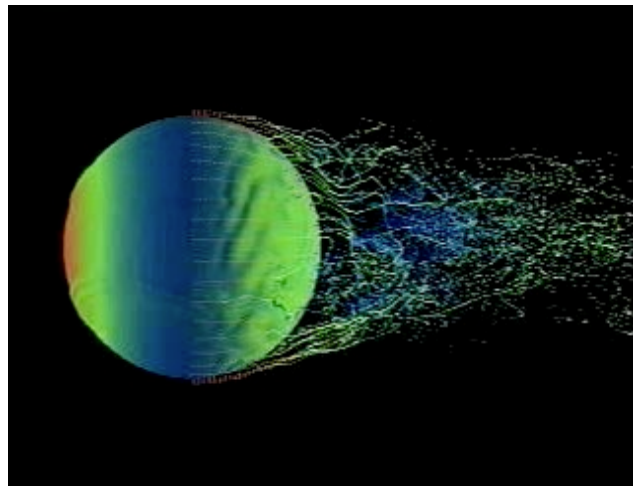
Pitching Motion Analysis



Gate Motion Capture



Measurement of Gate Motion  
using IMU Sensors



Visualization of flow around a ball